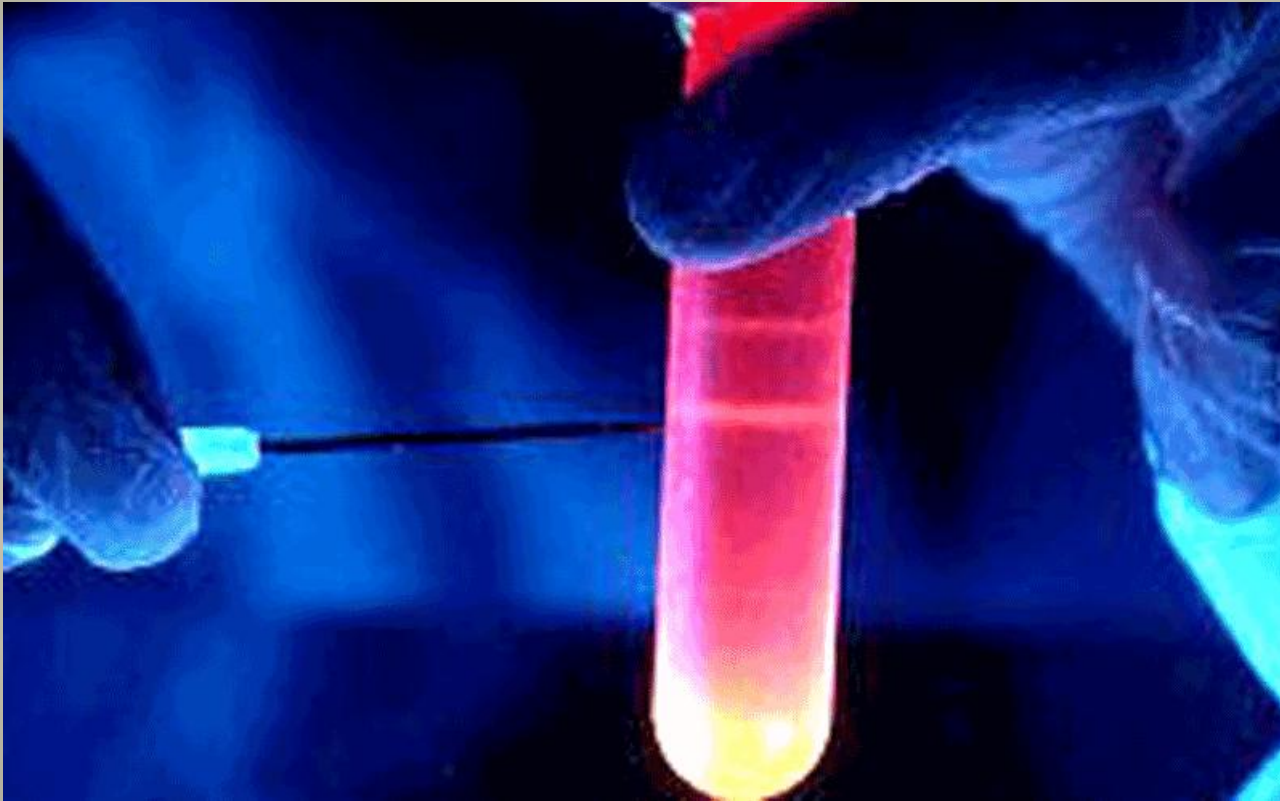


# The New High 2013



Designer Drugs and New Trends

25I-NBOMe (25I)	slide 4
Ketamine	slide 24
Kratom	slide 41
Pump-It Powder	slide 55
Methoxetamine	slide 66
Benzo Fury	slide 76
Smoking Alcohol	slide 89
Waxy Marijuana	slide 99
Butane Extraction Process	slide 111
Zannie Air Freshener	slide 124
Molly (Bath Salts)	slide 143
Electronic Cigarettes with THC	slide 154
Alcohol Enema	slide 162
Liquid Meth	slide 170
Cheeba Chews	slide 188
Tetrahydrocannabinol (THC) Pills	slide 194

# FAIR USE NOTICE

Due to this material being collected from various open sources, it may contain copyrighted material the use of which has not been specifically authorized by the copyright owner. I believe this constitutes a 'fair use' of any such copyrighted material as provided for in section 107 of the US Copyright Law. In accordance with Title 17 U.S.C. Section 107, this presentation is distributed without profit for the public good, primarily intended for those in Law Enforcement, First Responders, Firefighters, Medical Personnel, Customs Personnel, Teachers and Parents for comment and nonprofit educational purposes. For more information go to:

[http://www.copyright.gov/title17/92chap1.html#107.](http://www.copyright.gov/title17/92chap1.html#107)

# 25I-NBOMe (25I)



# Street names

2C-I-NBOMEe; 25I-NBOMe; 25I; N-  
Bomb; Smiles

# Overview

25I-NBOMe (25I) is a new research chemical considered to be a hallucinogen with psychedelic, stimulant, euphoriant effects. Drug users perceive this chemical as a “legal version” of LSD. 25I is very potent and is active at extremely low ( $\mu\text{g}$  - microgram level) doses, most frequently observed as blotter paper doses. Because this chemical is new to the “legal high” market, it has not been widely seen, however, it has already been encountered in several States with reports of abuse beginning in 2010.

25I-NBOMe is unscheduled under United States federal law. However, it could be considered an analog of 2C-I (a Schedule I controlled substance) under the Federal Analogue Act. In this case, sale or possession of 25I-NBOMe with the intent of human consumption would be illegal. The United States Department of Homeland Security is currently attempting to prosecute someone in federal court with 25I-related charges under the analogue act. Virginia, Louisiana, and Florida have specifically scheduled 25I-NBOMe as a Schedule I controlled substance.

# Effects

## Desired

- strong open and closed eye visuals, including trails, color shifts, brightening, etc.
- mood lift
- euphoria
- mental and physical stimulation
- increase in associative & creative thinking
- increased awareness & appreciation of music
- life-changing spiritual experiences
- feelings of love and empathy
- increased pattern recognition
- brings on synesthesia/chromesthesia in users who normally don't experience synesthesia; intensifying it in people who already have the condition

## Neutral

- general change in consciousness
- pupil dilation
- unusual body sensations (facial flushing, chills, goosebumps, body energy)
- change in perception of time, time dilation
- slight increase in heart rate
- yawning, especially when coming up
- bruxism

## Undesired

- (likelihood of negative side effects increases with higher doses)
- difficulty focusing
  - confusion
  - scrambled communication
  - vasoconstriction
  - shaking
  - nausea
  - vomiting (normally only on the 'come up', in the experience of some this occurs with every use, whereas in others never at all.)
  - insomnia
  - looping, recursive, out of control thinking
  - paranoia, fear, and panic
  - unwanted and overwhelming feelings
  - unwanted life-changing spiritual experiences
  - fainting
  - dystonia (rare)
  - seizure (rare)
  - death

**2C-I-NBOMe Duration  
Sublingual / Buccal  
( tentative )**

<b>Total Duration</b>	<b>6 - 10 hrs</b>
<b>Onset</b>	<b>15 - 120 mins</b>
<b>Coming Up</b>	<b>30 - 120 mins</b>
<b>Plateau</b>	<b>2 - 4 hrs</b>
<b>Coming Down</b>	<b>1 - 4 hrs</b>
<b>After Effects</b>	<b>1 - 7 days</b>
<b>Hangover / Day After</b>	<b>???</b>

**2C-I-NBOMe Duration  
Insufflated  
( tentative )**

<b>Total Duration</b>	<b>4 - 6 hrs</b>
<b>Onset</b>	<b>5 - 10 mins</b>
<b>Coming Up</b>	<b>10 - 30 mins</b>
<b>Plateau</b>	<b>60 - 120 mins</b>
<b>Coming Down</b>	<b>120 - 180 mins</b>
<b>After Effects</b>	<b>1 - 7 days</b>
<b>Hangover / Day After</b>	<b>???</b>

25I-NBOMe effects usually last 6-10 hours if taken sublingually or buccally. When it is insufflated, effects usually last 4–6 hours. Effects can however last significantly longer depending on dosage; durations longer than 12 hours have been reported.

25I-NBOMe can also be vaporized and inhaled, this may cause significantly quicker effects and shorter duration as is expected from that route of administration. This route of administration is however not recommended, unless when using precise liquid measurement, due to the difficulties of measuring and handling substances active in the microgram range.

Case reports of seven British males who presented to an emergency room following analytically confirmed 25I-NBOMe intoxication suggest the following potential adverse effects: tachycardia , hypertension, agitation, aggression, visual and auditory hallucinations, seizures, hyperpyrexia, clonus, elevated white cell count, elevated creatine kinase, metabolic acidosis, and acute kidney injury.

# Incidents

As of May 2013, 25I-NBOMe has reportedly led to five overdose deaths in the United States.

In June 2012, two teens in Grand Forks, North Dakota and East Grand Forks, Minnesota fatally overdosed on a substance that was allegedly 25I-NBOMe, resulting in lengthy sentences for two of the parties involved and a Federal indictment against the Texas based online vendor.

A 21-year-old man from Little Rock, Arkansas died in October 2012 after taking a liquid drop of the drug nasally at a music festival. He was reported to have consumed caffeinated alcoholic beverages for "several hours" beforehand. It is unclear what other drugs he may have consumed, as autopsies generally do not test for the presence of research chemicals.

In January 2013, an 18 year-old in Scottsdale, Arizona, died after consuming 25I-NBOMe sold as LSD; a toxicology screening found no other drugs in the person's system.

The drug is the suspected cause of death in another Scottsdale, Arizona, incident in April 2013.

# User Experiences

[750 ug, sublingal] "I was laughing hysterically at everything R is saying, and vice versa. The OEV's/CEV's are incredibly intricate and unavoidable. Definitely an incredibly detailed and layered fractal pattern. I am most certainly in a profound psychedelic headspace (i.e. I intuitively understand the universe, society, etc.) [...] It's much more of a pure psychedelic than it's non-benzyl substituted cousin 2C-I, while still retaining some of the entactogen qualities."

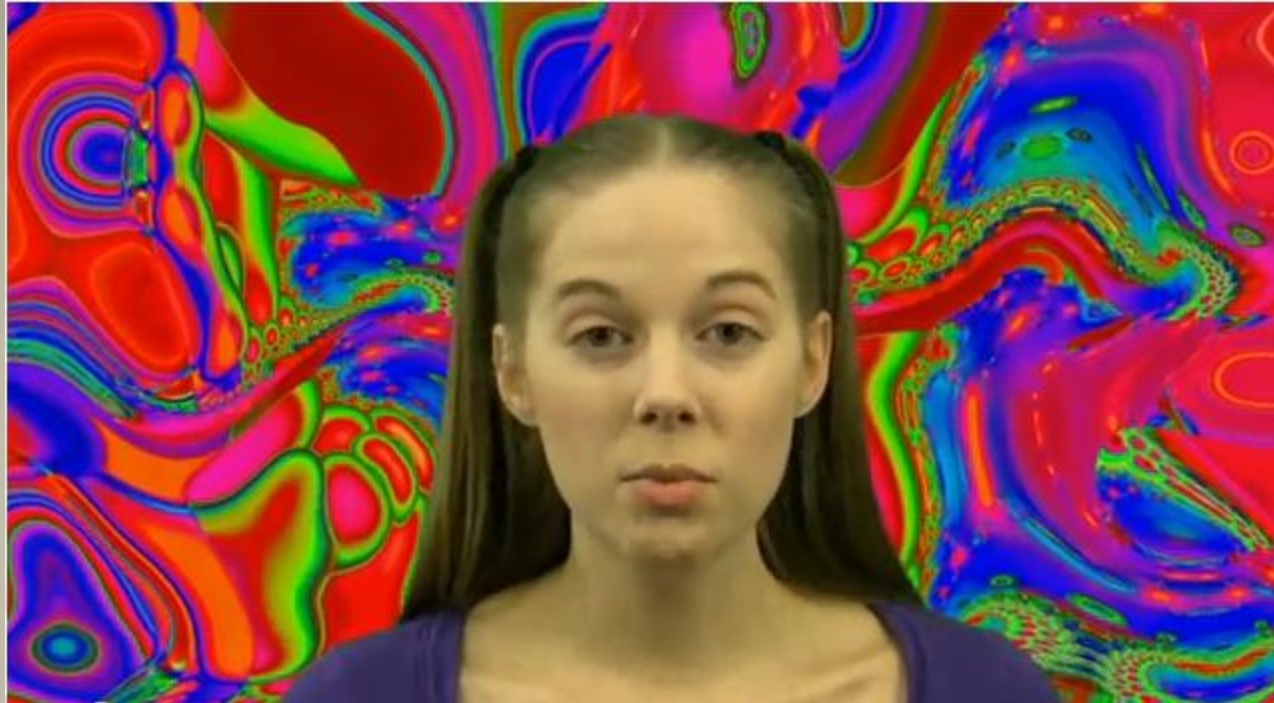
[500-1000 ug, smoked] "The lack of mind-fuck makes it easier to deal with how incredibly high I instantly get when I freebase it. The visuals are amazing and I've only just scratched the surface. The body high is excellent and very smooth, no jitters that I've notice or anyone I've shared this with. It may not give me any insights or spiritual awakenings, but if I we're really being honest, most of us I think are really after exactly what this chem offers."

[2 blotter hits, buccal, 2 lines, insufflated]  
"Wow! visuals are crazy and the music is intense, waves of 3D objects have taken over my living room and everything looks beautiful! [...] Amazing party drug! I don't feel very stimulated even though this is a psychedelic stimulant? But euphoria I feel quite allot and this is a really social drug although on high doses its a bit hard to have a real conversation."

# Symptoms of overdose

Symptoms of overdose or adverse effects of 25I-NBOMe include: difficulty focusing, confusion, scrambled communication, narrowing of the blood vessels, tremors, nausea and vomiting, insomnia, out of control thinking, paranoia, panic, seizure, and possible death.

# Video



<http://www.youtube.com/watch?v=5CqrRoaBaag>

# Ketamine



# Overview

Ketamine goes by the brand names Ketaset<sup>®</sup> or Ketalar<sup>®</sup>. It is commonly injected intramuscularly, but can also be taken by mouth and nasally.

Ketamine is a dissociative anesthetic that has some hallucinogenic effects. It distorts perceptions of sight and sound and makes the user feel disconnected and not in control. It is an injectable, short-acting anesthetic for use in humans and animals. It is referred to as a “dissociative anesthetic” because it makes patients feel detached from their pain and environment. Ketamine can induce a state of sedation (feeling calm and relaxed), immobility, relief from pain, and amnesia (no memory of events while under the influence of the drug). It is abused for its ability to produce dissociative sensations and hallucinations. Ketamine has also been used to facilitate sexual assault.

# Street names

Cat Tranquilizer, Cat Valium, Jet, Jet K, K, Kit Kat,  
Purple, Special K, Special La Coke, Super Acid, Super  
K, Vitamin K Looks Black Hole, Bump,, Green, ,  
KHole, Psychedelic Heroin,



# Methods of abuse

Ketamine, along with the other “club drugs,” has become popular among teens and young adults at dance clubs and “raves.” Ketamine is manufactured commercially as a powder or liquid. Powdered ketamine is also formed from pharmaceutical ketamine by evaporating the liquid using hot plates, warming trays, or microwave ovens, a process that results in the formation of crystals, which are then ground into powder. Powdered ketamine is cut into lines known as bumps and snorted, or it is smoked, typically in marijuana or tobacco cigarettes. Liquid ketamine is injected or mixed into drinks. Ketamine is found by itself or often in combination with MDMA, amphetamine, methamphetamine, or cocaine.

# Mental Side Effects

Ketamine produces hallucinations. It distorts perceptions of sight and sound and makes the user feel disconnected and not in control. A “Special K” trip is touted as better than that of LSD or PCP because its hallucinatory effects are relatively short in duration, lasting approximately 30 to 60 minutes as opposed to several hours. Slang for experiences related to Ketamine or effects of Ketamine include:

“K-land” (refers to a mellow and colorful experience), “K-hole” (refers to the out-of-body, near death experience), “Baby food” (users sink in to blissful, infantile inertia), and “God” (users are convinced that they have met their maker). The onset of effects is rapid and often occurs within a few minutes of taking the drug, though taking it orally results in a slightly slower onset of effects. Flashbacks have been reported several weeks after ketamine is used. Ketamine may also cause agitation, depression, cognitive difficulties, unconsciousness, and amnesia.

# Side Effects

A couple of minutes after taking the drug, the user may experience an increase in heart rate and blood pressure that gradually decreases over the next 10 to 20 minutes. Ketamine can make users unresponsive to stimuli. When in this state, users experience: involuntarily rapid eye movement, dilated pupils, salivation, tear secretions, and stiffening of the muscles. This drug can also cause nausea.

# Overdose Effects

An overdose can cause unconsciousness and dangerously slowed breathing.

# Legal Status

Legal status in the United States Since the 1970s, ketamine has been marketed in the United States as an injectable, short-acting anesthetic for use in humans and animals. In 1999, ketamine including its salts, isomers, and salts of isomers, became a Schedule III non-narcotic substance under the Federal Controlled Substances Act. It has a currently acceptable medical use but some potential for abuse, which may lead to moderate or low physical dependence or high psychological dependence.

# Video



[http://www.youtube.com/watch?v=Qa\\_L5BZzPDE](http://www.youtube.com/watch?v=Qa_L5BZzPDE)

# Kratom



# Overview

Kratom is derived from the *Mitragyna Speciosa* plant indigenous to Southeast Asia, primarily in Thailand. This plant consists of a psychotropic molecule called Mitragynine that's been reported to produce both stimulant and sedative effects, depending on the dosage. Kratom is purportedly a stimulant at lower doses with effects to include alertness, physical energy, talkativeness and giddiness. With higher doses, Kratom mimics an opiate with sedative effects and euphoria. These effects are usually felt within 5–10 minutes after ingestion and the high can last from 2–5 hours.

# Side Effects

Negative side effects include nausea, sweating, itching, dry mouth and constipation. Long-term use can potentially result in anorexia, insomnia, weight loss and in some cases psychotic episodes, such as confusion, delusions and hallucinations. "Long-term daily high dose kratom consumption is also reported to induce nervousness, sleeplessness, loss of libido, constipation and the darkening of skin complexion," Kratom.com says in its "dangerous effects" section.

Although there have been no fatalities from kratom, "The known risks and dangers of Kratom overdoses include hallucinations, delusions, listlessness, tremors, aggression, constipation and nausea," the site said.

The emergency room psychiatrist said the patient who recently came in reported using kratom several times a day, every day, "because he discovered that if he stopped it he started getting withdrawal." The doctor said the man's symptoms appeared "identical to heroin withdrawal."

Upon arrival, the patient was suffering "severe depression and anxiety and emerging opiate withdrawal symptoms," including chills, aching muscles and gooseflesh, the psychiatrist said. The patient was treated to ease withdrawal symptoms and then hospitalized, according to the doctor.

Like "bath salts" and "spice" — drugs that are now illegal but were legal and trendy until law enforcers and medical researchers gathered data on their dangers — kratom is under scrutiny, having been added to a Drug Enforcement Administration's list of "drugs and chemicals of concern."

# Availability

Kratom is typically sold via the Internet, at convenience stores and head shops in the form of green leaves (whole or crushed) and green powder or pills (capsules). Individuals can ingest it orally, smoke it or drink it as a tea when in leaf form. Kratom has been sold as incense with labels on the package stating “not for human consumption,” resembling the packaging and marketing common with Spice and Bath Salts.



Online ads listing these types of products can be found in a variety of locations across the nation. Prices can range from \$15–50 per five-gram packet or \$18–25 for about 50 capsules. The DEA's Office of Diversion Control states Kratom is a drug and chemical of concern with no legitimate medical use, but it remains legal to sell and use.

# Methods of abuse

Kratom is traditionally and commonly consumed as a tea. It is also consumed in the form of powder packed into capsules. Some people even cook with kratom, making medicated and delicious desserts and drinks. Vaporizing it is also effective, as is smoking it, to a lesser degree. It can not be emphasized enough that inhalation, insufflation, or snorting of kratom is ill-advised and ineffective. Kratom extracts, especially those claiming to be pure alkaloids, are highly potent and could be powerfully uncomfortable in doses that are too high. Snorting a powder can lead to damage to the nasal tissue, nausea, and even unconsciousness.



# Video



<http://www.youtube.com/watch?v=AY2A1hKPkU8>

# Pump-It Powder



# Overview



This is one of the newest synthetic products on the market sold or advertised as an “enhanced plant vitamin” with the “not-intended-for-human-consumption” label on the packaging. One of the primary ingredients in Pump-It is Geranamine, also known as Methylhexanamine, which is an amphetamine-related stimulant and decongestant found naturally in the geranium plant. Methylhexanamine hasn’t been widely studied and isn’t listed as an illegal substance under U.S. law. It’s unknown what exact components manufacturers are putting into synthetic drugs like Pump-It, which highlights once more the danger products like these pose to the general population.

# Side Effects

Users have reported these products produce effects similar to other banned substances. More specifically, signs and symptoms associated with Pump-It use are consistent with effects seen in stimulant and hallucinogen drugs: Increased heart rate and body temperature, dilated pupils, sensory distortions and psychotic symptoms. The high this product produces will usually last 4-6 hours with some reports claiming highs lasting up to 12 hours, depending on the dosage taken.

Most users are in the experimental age range, between 18 and 25.

“Patients will come in acting confused, maybe hallucinating, seeing things, hearing things, and acting bizarrely. Sometimes they will have chest pain or their heart will be racing. It can simulate or mimic a heart attack,” said Dr. Howard Jarvis, medical director of the Emergency Department for Cox Health Systems. “People can die from using these sorts of things. People have died using these sorts of things.”

# Methods of abuse

This product can be snorted, injected or smoked, and the onset of effects may be delayed which may lead to taking more of the contents and increasing the chances of negative effects. Pump-It has been sold at gas stations, convenience stores, novelty shops and on the Internet, and appears to be most popular in the Midwest states. Pump-It is usually packaged in a 500 mg or 1000 mg tin container and costs around \$30 for a 500 mg.

Most users are in the experimental age range, between 18 and 25.

“Patients will come in acting confused, maybe hallucinating, seeing things, hearing things, and acting bizarrely. Sometimes they will have chest pain or their heart will be racing. It can simulate or mimic a heart attack,” said Dr. Howard Jarvis, medical director of the Emergency Department for Cox Health Systems. “People can die from using these sorts of things. People have died using these sorts of things.”

# Video



<http://www.ky3.com/videogallery/70192379/News/VIDEO:-Pump-It!-powder-lands-users-in-the-hospital>

# Methoxetamine

**Methoxetamine**


CCN(CC)C(=O)C1CCCCC1C2=CC=C(OC)C=C2

Name: 2-(3-methoxyphenyl)-2-(ethylamino)cyclohexanone

Cas:

Use: Laboratory Reagent Only

Weight - 1g

 R22; S2, S3, S7, S8

**Warning: Research Use Only**  
Not for human consumption

# Street names

MXE, M-Ket, Kmax or Mexxy

# Overview

Methoxetamine, or MXE, is a new designer “research chemical” product often taken for its hallucinogenic and dissociative effects. It’s usually sold as a white powdery substance. Although not currently scheduled under the U.S. Controlled Substance Act, MXE is considered to be an analog of the drug Ketamine. Ketamine is classified as a “dissociative anesthetic” and was originally used as a powerful tranquilizer on animals.



MXE is billed as a “safe and legal alternative” to Ketamine and is described as having the same positive effects as Ketamine without the negative side effects. The front of the MXE packaging usually reads “research chemical” and “not for human consumption.”

# Side Effects

User reports on some of the main effects of MXE include hallucinations, feelings of euphoria, warmth, enlightenment and being detached from the world around them. Increased heart rate and blood pressure, involuntary eye movement, loss of balance, poor coordination and slurred speech have also been reported. According to MXE users, it normally takes 10–15 minutes for the effects of MXE to be felt, but sometimes it can take 60–90 minutes. This delayed onset can cause people to double dose, which can lead to a potential overdose and even death. MXE is usually snorted or ingested in capsule, tablet or pellet form.

MXE has already been linked to deaths in Europe and European health officials have warned of its dangerous side effects. Methoxetamine was placed under temporary class drug control in Great Britain in 2012, which prohibits import and sale for one year. At present, MXE is unscheduled in the U.S. and relatively new to its recreational drug culture. MXE use has been reported more extensively in Europe when compared to the U.S., but may emerge as a new popular synthetic drug of abuse. 2012 online searches on U.S.-based web services with free listings found several advertisers offering MXE for sale.

# Video



<http://www.youtube.com/watch?v=rTJvzc41-p0>

# Benzo Fury



# SCIENTIFIC TERM

6-(2-aminopropyl) benzofuran or 1-benzofuran-6-ylpropan-2-amine 6-APB or Benfamine

# STREET NAMES

Benzo Fury, White Pearl

# Overview

Benzo Fury, or 6-APB, is a colorless stimulant, sold in powder and pellet or tablet form, and is marketed as a “research drug” and “not suitable for human consumption.” Benzo Fury is chemically similar to amphetamines and ecstasy (MDMA) and produces effects that mimic these drugs, including alertness, increased energy, euphoria, feelings of peace and love toward others, dilated pupils, tingling feelings, tightening of jaw muscles, raised body temperature, increased heart rate, anxiety/panic attacks and paranoid/confused states. There’s very little research and literature regarding the nature and effects of Benzo Fury. Benzo Fury is usually consumed in pellet/tablet form, but can also be snorted.





Benzo Fury is sold primarily through websites claiming to be manufacturers or suppliers of research chemicals. The website [www.benzofury.com](http://www.benzofury.com) sells Benzo Fury for 10 British Pounds (around \$15-16 U.S. dollars) per pill/pellet and shipping to the U.S. is available. Benzo Fury is unscheduled in the U.S. and is currently legal in the United Kingdom.

# Side Effects

Benzo Fury is chemically similar to amphetamines (like speed) and to ecstasy, so it's reasonable to assume that they have similar effects to those drugs. Hence, people using Benzo Fury may experience: Feeling very up, alert, chatty and energised. Being 'in tune' with their surroundings and/or with music and colours feeling more intense. Temporary feelings of love and affection for the people they're with and for the strangers around them. Physical effects such as dilated pupils, tingling feelings, tightening of the jaw muscles, raised body temperature and the heart beating faster. See the speed and ecstasy pages for more details.

Benzo Fury is chemically similar to amphetamines (like speed) and to ecstasy, and so it's reasonable to assume it has similar risks to those drugs. Hence, people using Benzo Fury may experience: Anxiety, panic attacks, confused states, agitation or aggression, paranoid feelings and even psychosis. A 'comedown' that may last a number of days – with feelings of lethargy and depressed mood.

# Legal Status

On 10th June 2013, 5-APB, 6-APB, 5-APDB and 6-APDB was banned by the Government under a temporary class drug order. This means that most samples of 'Benzo Fury' will now be illegal and remain illegal for at least 12 months while drug experts consider their full range of harms. It is therefore illegal to sell, supply or give away these substances to friends. If the police suspects that you have a 'legal high' which contains a temporary class drug, they can confiscate the substance and dispose of it.

Supplying someone else, including your friends, can get you fourteen years in jail and/or an unlimited fine under the Misuse of Drugs Act 1971. Until recently 'Benzo Fury' has been sold as a 'legal high'. Benzo Fury' is actually a brand name, and you cannot actually be sure what it contains. It may contain other substances and they could be illegal to possess or to supply to others.

# Video



<http://www.youtube.com/watch?v=DQi0EzANH9I>

# “Smoking Alcohol” Alcohol Without Liquid (AWOL)



# Overview

An individual can pour alcohol over dry ice and inhale it directly or with a straw, or make a DIY vaporizing kit using bike pumps. The alcohol of choice is poured into a bottle, the bottle is corked, and the bicycle pump needle is poked through the top of the cork. Air is pumped into the bottle to vaporize the alcohol, and the user inhales. This can also be accomplished by using a nebulizer device and placing alcohol in the medicine reservoir.



In 2004, the U.S. saw a brief emergence of the trend with the availability of the AWOL (Alcohol Without Liquid) device, but the product was quickly banned in the U.S. and lost its following.

Nearly a decade later, clinicians are seeing evidence that the practice is gaining some traction — and not just among college kids and adolescent risk takers. It's popular among people who want to lose weight and don't want the calories that come from consuming alcohol.



# Methods of abuse

When alcohol vapor is inhaled, it goes straight from the lungs to the brain and bloodstream, getting the individual drunk very quickly. Because the alcohol bypasses the stomach and liver, it isn't metabolized, and the alcohol doesn't lose any of its potency.

Drinkers feel the effects almost instantly, but the risks are also much higher. People who smoke their alcohol are at a much greater risk of getting alcohol poisoning and potentially overdosing. When people drink too much alcohol, they tend to vomit. Getting sick is one of the ways that prevents an alcohol overdose, but when alcohol circumvents the stomach and liver, the body can't expel it.

It's also much harder to know just how much alcohol you're consuming in one sitting if you're not stringently measuring. If a cup of alcohol is poured into a bottle and then vaporized, the drinker cannot tell if they are inhaling a few sips or the whole cup, since the liquid remains in the bottle.

"It's also terrible for your lungs and nasal passages," says medical officials. "Your lungs are not meant to inhale something that can turn back into a liquid. When you think of liquid in the lungs, you think of drowning."

# Video

<http://www.youtube.com/watch?v=g-nCR-ww4kA>



<http://www.youtube.com/watch?v=KscCY7gJaQI>

# Waxy Marijuana



# Overview

Open sources indicate that waxy marijuana or wax marijuana is the purest form of cannabis. It contains anywhere from 82-99% THC making it several times more potent than a marijuana bud on a cannabis plant which usually contains 5-28% THC. One hit of wax is supposedly equal to 1-2 full cannabis joints and is reported as being more clear and longer lasting than average marijuana. Wax marijuana is also a medical marijuana product. Typical wax marijuana is golden in color and crumbly; though texture may vary based on type.

“DABBING” is the term used for those who are smoking concentrated cannabis either in wax, oil, or budder form. “Do you want a dab?” or “Let’s dab” are two of the more common phrases you may hear regarding those who “dab”. The term “Dabs” became popular in the Western medical marijuana states to refer to the smoking of butane hash oil, also known as butane honey oil, or simply BHO. Other names include “honey oil,” “red oil,” “jelly-butane hash,” and similar concoctions.

The “butane” part of BHO refers to the solvent used to extract the cannabis resin from the plant. A large glass tube or PVC pipe is packed with cannabis, usually the discarded “shake” left from trimming the buds , increasingly actual “bud” is used. Liquid butane is forced through the tube and the butane strips the resins from the plant to collect in a container. The container is left uncovered to allow the butane evaporate away. What’s left is a very potent form of hash oil. The extracted cannabinoids are often called hashish, but they are not hashish in the traditional sense of the word. They are “cannabis concentrates.” So hash oil, budder, earwax or most any form of concentrated cannabis processed in this manner could be considered a dab.

# Side Effects

Experienced pot smokers will often pass out after taking a hit of dab. In addition dab inhalation is followed by intense coughing fits. Proponents of marijuana use stand by dabs safe use. “It’s not that the hashish preparations are any more dangerous, it is the same non-toxic cannabis, after all. It’s simply more potent, so bottom line, you don’t need to take these big lung-buster hits like you’re trying to win the ‘clear the bong’ contest.”

So let's follow this thinking...it's no more dangerous than smoking pot, but pot doesn't usually make a person pass out leading to the potential of smashing ones head on something as they fall. So in this definition of more dangerous it's possible that passing out and a hacking cough count as more dangerous. In addition there is some speculation that the products used to extract the resins (butane, isopropyl alcohol, chloroform, etc.) may leave residual chemicals in the oil that when smoked could cause other damage to one's health, especially the lungs.

An additional issue that is cropping up steadily in states allowing “medical marijuana” use is explosions due to the butane method of making dabs. Butane is a heavier-than-air gas that moves to the floor near pilot lights, electrical outlets, discarded cigarette butts, etc. Combining highly explosive gases with unknowledgeable, potentially stoned people, who place the butane mixture in hidden, often unvented, enclosures while waiting for the butane to evaporate, is a recipe for disaster. This is certainly an issue first responders need to be aware of when responding to or investigating fires/explosions.



# Video



<http://www.youtube.com/watch?v=lc6tG34Ln6M>

# Butane Extraction Process



The method for extracting hash oil has its basis in an industrial extraction method known as Supercritical Fluid Extraction. It uses totally over-the-counter butane gas (8 oz can) as the extraction solvent, and requires nothing even remotely suspicious or difficult to purchase. The only other thing needed is a section one and a half feet long and 1 3/4" diameter PVC pipe and two end caps. Threaded PVC is not necessary.

For reasons not yet clear, butane (and perhaps other gas/solvents with similar ultra-low-boiling properties) selectively solvate the fraction(s) of cannabis oils, pulling out only an amber "honey oil" and leaving the vegetative oils, waxes, chlorophyll, etc. behind in the plant matter.

# Observations

You may notice in one of the PVC end caps a single small hole is drilled in the center. This hole will be sized to snugly receive the little outlet nozzle of a butane can.

In the other PVC end cap 5 or 6 small holes will be drilled, clustered in the center (like a pepper shaker). This is the drainage end of the pipe.

A piece of paper towel or coffee filter may be found inside the PVC for filtration.

PVC pipe may be found with plant matter that has been pulverized into a coarse powder.

Pipe may be found mounted over an “oil” collection vessel.

The process takes a whole 8-oz can of butane. A spark at this point in the process would spell disaster since the PVC is now an incendiary explosive device that is leaking butane.

The butane moves down the pipe. When the extraction, containing butane, gets to the bottom it will drain into the collection vessel. One may notice a pale, glowing yellow-green-gold hue of the oil extract.

Over approximately five to eight minutes, the butane extract will finish draining from the pipe to the receiving vessel.

There is a lot of residual butane still evaporating from within the pipe. A recently made batch will show a stream of butane fumes coming from the top hole of the PVC.

Butane has a very low-boiling point and is volatile. Any residual butane will likely begin boiling at ambient (room) temperature.

It takes about 20 minutes for most of the butane to evaporate from the PVC pipe. Remember, butane is heavier than air and therefore collects in areas open to pilot lights on water heaters and furnaces.

After the butane evaporates the oil is redissolve in anhydrous or high 99% isopropanol (isopropyl) alcohol, and then poured into a vial and left to sit out for a day or two allowing the alcohol to evaporate. Any change to the temperature of the solution before the butane is totally evaporated will cause the oil to "superboiled" out of the containment vessel.

The final product is a deep yellow-amber colored oil. Since there is some concern about the possibility of a PVC residue in the final product some individuals will use steel instead of PVC.

# Dangers

If responders are called to an occupancy where materials and paraphernalia believed to be used for hash oil extraction are found, they should immediately exit the structure and call law enforcement. Ultimately a bomb squad may need to respond, especially if homemade extraction tubes resembling pipe bombs are found. It is important to note as of the date of this alert, operations that have been discovered have not resulted in pipe bombs being found; what was found were, in fact, extractor tubes. This does not mean that eventually pipe bombs will not be found. With the understanding that drug dealers often use booby traps against law enforcement and competing drug dealers, it is wise to err on the side of safety and take all necessary safety precautions. These include but are not limited to the proper use of PPE and SCBA as appropriate



# Video

<http://www.youtube.com/watch?v=1HuF0UnXXWA>



<http://kfor.com/2013/03/11/hash-oil-explosion-in-apt-raises-larger-drug-issue/>



# Zannie Air Freshener



# Overview

ZANNIE, phenazepam, a product marketed on the internet as a relaxing air freshener contains a prescription tranquilizer similar to Valium and Xanax. Phenazepam is a benzodiazepine drug, which was developed and produced in Russia. In 1975 phenazepam was first synthesized in the USSR. In 2003 phenazepam is reported as a new recreational drug in Finland. In 2007 phenazepam is available in the UK as a powder.

In 2010 phenazepam was found in the United States as the psychoactive ingredient in blotter prints submitted to the DEA as suspected LSD. In isolated cases it has been around in the U.S. since 2010, but it now appears to be hitting main stream synthetic drug sites being sold over the internet.

# Side Effects

Onset within 1 hr.

Effects may last several days.

Powerful, long-acting benzodiazepine.

Compared with other benzodiazepines, overdoses with phenazepam are both more likely and more problematic for these reasons.

Phenazepam is exceptionally potent. Active doses start at 0.5 mg.

The visual appearance of a dangerous dose is not impressive. The visual size of a 2 mg (0.0002) alprazolam (Xanax) bar is equivalent to a 0.5 gram (500 mg) of phenazepam. If the user is accustomed to dealing with benzodiazepines in the form of tablets or bars and attempts to 'eyeball' an amount of phenazepam that looks similar, or is even a tenth as large, they will take a massive overdose. Likewise, snorting a 'line' of phenazepam similar in size to a line of cocaine or heroin is likely to produce an overdose.

Compared to prescription benzodiazepines that have been diverted from regulated channels, phenazepam is inexpensive, and rarely sold in quantities of less than 100 mg. Any user who can afford to buy this drug will be buying a dose capable of causing prolonged coma.

Phenazepam's effects are often delayed by 2-3 hours. The inexperienced user, noticing no effects within the first hour, may believe they have taken too little and re-dose, resulting in an overdose.

Phenazepam's 60 hour half-life makes dosing mistakes hard to recover from. The overdose will last for days, possibly weeks.

Death can easily occur if Zannie is used along with CNS depressant drugs, opiates, alcohol, or barbiturates. It has had some really bad effects when a person takes it with other central nervous system depressants. Side effects include: hiccups, dizziness, loss of coordination, drowsiness, and amnesia which can be quite pronounced at high doses. Abrupt stoppage following prolonged use results in: restlessness, anxiety, insomnia, seizures, convulsions, and death.

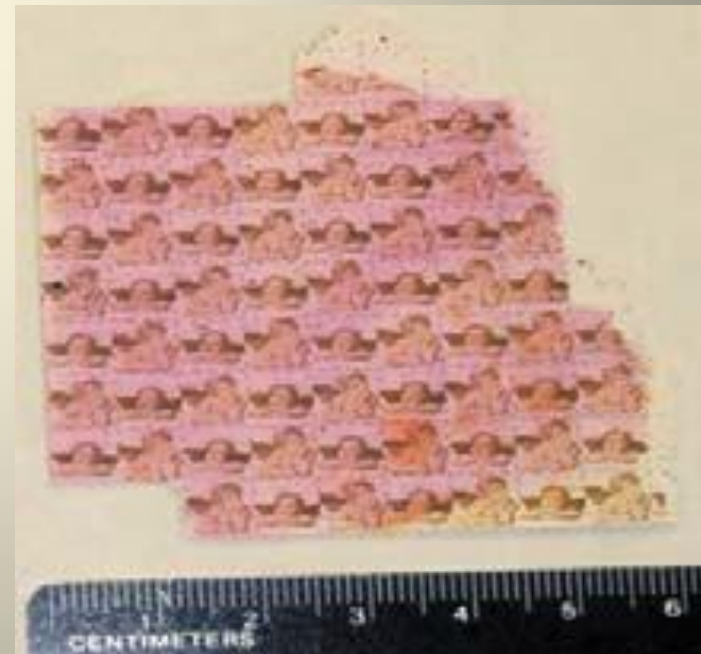
# Incidents

Two overdose deaths occurred in the United States in 2010. The first occurred in Georgia in September 2010, an 18-year-old died after using a combination of phenazepam and oxycodone. Three other individuals in the same incident were hospitalized. The second death occurred in October 2010 in Charleston, West Virginia. A 42-year-old man died after ingesting both phenazepam and poppy tea.

# Legal Status

The Federal Analog Act of the U.S. applies only to substances classified as Schedule I and Schedule II. Controlled benzodiazepines under the U.S. Controlled Substances Act are classified as Schedule IV. Phenazepam is a non-scheduled drug in the United States. In Russia where phenazepam is legal it is used in the treatment of neurological disorders such as epilepsy, alcohol withdrawal syndrome and insomnia. Phenazepam is a long acting benzodiazepine with anti anxiety, euphoric, anticonvulsant, muscle relaxant, and hypnotic (sleep-inducing) effects.

Its English name is a transliteration of the Russian name with alternate spellings: 'fenazepam', 'phenazepam'. It is also used as a premedication before surgery. Mark Ryan, Director of Louisiana Poison Control Center is concerned that the product could be used as a predatory (date rape) drug. Phenazepam creates a type of sedation in which a person can't remember what happened.



# Methods of abuse

Users reported several administration routes. Injection, snorting, oral ingestion, rectal absorption, and cigarettes dipped in liquid phenazepam solution and then smoked. Smoking adds an additional health issue due to the fumes containing chlorine, bromine, and nitrogen oxide/nitrogen dioxide. All are toxic.

# Video

<http://www.youtube.com/watch?v=bYpguGup0Q0>



# Molly



# Overview

What is Molly? Molly is often advertised as the purest form of MDMA, however its true chemical make up varies amongst areas and dealers. In the Midwest HIDTA region, most of the chemical variations marketed as Molly contain bath salts. “Bath salts” is an informal name for a family of designer drugs containing substituted cathinones, which have similar effects to amphetamines and cocaine.

# MDMA (3,4-methylenedioxy-N-methylamphetamine)



Generally it has been seen in the powder form but now it is being seen in crystal form. Some users are carrying less than a gram. In the crystal form it is easily hidden, overlooked or not recognized as illegal narcotics by officers.

- 1.) Molly can be clear, white, brown or yellow brown in color.
- 2.) Molly can be contained in plastic bags or put into pill capsules.
- 3.) Molly can be crystallized, powdered or a mixture of both.

For reliable testing, officers need to use MDMA test kits to test it.

Molly is typically found in a clear capsule filled with a white powder with a yellow or brown tint. When conducting field tests on the capsule, the SIRCHIE NARK II field test may provide a positive indication for MDMA. However, laboratory results generally have shown the actual chemical compound in Molly is Methylenedioxypropylamphetamine (MDPV is a psychoactive drug with stimulant properties), Mephedrone (a synthetic stimulant drug of the amphetamine and cathinone classes), or Alpha- Pyrrolidinopentiophenone (A-PVP is a powerful synthetic stimulant drug which functions with approximately a quarter the potency of MDPV and the effects are said to be comparable).

Many users indicate their belief that Molly is the purest form of MDMA and have no knowledge that the capsules actually contain a combination of bath salts in any form. Molly has become a very popular party drug among young adults and is generally found at concerts and raves. In some areas of the Midwest HIDTA region, Molly appears to have replaced MDMA/ecstasy as the drug of choice in these arenas. There is a high risk of overdose with Molly due to the unpredictability of the mixture of MDMA and bath salts.

# Side Effects



Long term effects of Molly are known to be confusion, sleep abnormalities and memory loss, especially if combined with other drugs such as Marijuana, according to the National Institute on Drug Abuse's website ([drugabuse.org](http://drugabuse.org)). The website also reports that heavy use of Molly can cause unregulated temperatures in the body, which can have damaging physical effects and has in some cases been a cause of death for Molly users.

# Video

<http://www.youtube.com/watch?v=90xMmuQtV1M>



# Electronic Cigarettes with THC

**dube**

THE **dube** IS A PERSONAL, PORTABLE, HERBAL & WAX VAPORIZER THAT'S ACTUALLY DISCREET!

E-cigs are now common place and the **dube** fits right in. With the same dimensions as an e-cig, no one is the wiser.

only **\$59.99**

- UNIT
- WALL CHARGER
- USB CHARGER
- CLEANING TOOL
- INSTRUCTIONS
- AUTO SHUT OFF

# Overview

This device is not your typical vaporizer. It use a specially prepared liquid to administer psychoactive tetrahydrocannabinol (THC), the active ingredient in marijuana, to patients enrolled in the medicinal cannabis program. By using a THC based liquid, there are no by products released while smoking except water vapor.

Medical Cannabis Management began distributing the Cannabis e-cigarette to medical cannabis dispensaries and to physicians in California at the end of March 2013. The CannaCig vaporizes a small amount of THC containing liquid. The vapor is then inhaled by the user resulting in immediate effects as compared to Marinol which takes up to an hour reach full systemic effects. Marinol also has an expensive price tag while the new device sells for much less.

The use of a THC containing liquid eliminates the need for both the user and the dispensaries to keep actual marijuana on hand. The oil has the exact effect as Marinol and raw cannabis with less propensity for diversion of the drug and other crimes related to illicit drug use. We can also expect to see a standardization of THC dosing through quality control measures not available with raw cannabis production. As the CannaCig only vaporizes the oil, nothing is burned and no smoke is produced. Current devices used for vaporization of marijuana leaves (vaporizers) are expensive and unreliable as a THC delivery device.

The electronic cigarette heats the hash oil from a lithium- ion battery and the narcotic is transmitted to the recipient in the form of vapor. Individuals using this method appear to be smoking an electronic cigarette for its legitimate purpose and there is little to no odor commonly associated with the burning/smoking of marijuana.

# Video

<http://www.youtube.com/watch?v=mMRrm40jGC0>



# Alcohol Enema



# Overview

Using an alcohol enema involves placing a small tube into someone's rectum and pouring alcohol into the colon. Because the alcohol is absorbed directly into the bloodstream, the recipient gets drunk faster.

Our stomachs and livers have an enzyme known as alcohol dehydrogenase that breaks down ethanol to make it less toxic for our bodies, said Atlanta gastroenterologist Dr. Preston Stewart.

The lower gastrointestinal tract doesn't have that enzyme, so alcohol molecules are absorbed into the bloodstream through the lining of the colon. Eventually the alcohol would still make its way to the liver, Stewart said, but the high alcohol content would overwhelm the organ. "It's extremely dangerous."

No one is sure when alcohol enemas first appeared on the social scene or how frequently they're being used.

# Side Effects

The effects have been fatal in at least one case. An autopsy performed after the death of a 58-year-old Texas man in 2004 showed he had been given an enema with enough sherry to have a blood alcohol level of 0.47 percent. Negligent homicide charges were later dropped against his wife, who said she gave him the enema.

# Video

**NEED TO  
KNOW**

- 13 Pi Kappa Alpha International fraternity members at University of Tennessee cited
- One student ended up in critical condition



LIVE

7:11AM ET

H.N

MORNING  
EXPRESS

**POLICE: FRATERNITY USED "ALCOHOL ENEMAS"**  
13 PI KAPPA ALPHA MEMBERS CITED

H.N

<http://www.hlnetv.com/video/2012/09/26/alcohol-enema-fraternity-tennessee>

# Liquid Meth



# Overview

Liquid meth is the newest form of methamphetamine that is reported to be surfacing throughout many areas in the United States. Manufacturers of this highly toxic drug are beginning to dissolve meth in water in order to liquefy the drug; the reason that liquid meth is quickly becoming popular with many of the individuals who are meth dealers, is because it had made transporting the toxic drug so much easier.

Individuals who produce meth will often place this liquid form of the drug into various different types of liquor bottles, which are regularly seen at various different ports of entry. Once the liquid meth has passed inspection and been shipped to its destination, individuals will then boil away the water; thus, only the solid form of meth will remain.

Liquid meth is also being applied to paper, and is sometimes sent through packages in the U.S. mail. Illinois law enforcement officials discovered this recently while investigating a suspicious package that had been sent through the postal service; after a thorough search of the package was completed, the officers reported finding sheets of paper that appeared to have had liquid meth applied to them. After doing the initial lab test in order to positively identify their findings, the officers concluded that methamphetamine users could easily tear off a piece of this meth laced paper and put it into their mouth in order to be able to get the drug into their system.

Liquid meth has been reported to be stronger than any of the other forms of methamphetamine that is currently available on the street; this information about liquid meth was derived from meth users who often act as drug informers to law enforcement in an effort to minimize or eliminate their pending drug charges. Several informants have told law enforcement officers that liquid meth was much "better" than any of the other forms of methamphetamine that they had ever used before. Law enforcement officials in the southern portion of the United States were so concerned about getting the word out about liquid meth, that they put together a flyer about it, in the hopes that police officers in other parts of the U.S. will begin to be on the lookout for it.

Although very little is known about liquid meth, the Alabama Department of Forensic Science set out to find out more about what goes into making this form of methamphetamine; this was accomplished by dissolving a sample of liquid meth that had been sent to their lab. Their findings indicated that liquid meth was made from a substance named Terofun (Pseudoephedrine HCL), which is commonly found in pill form.

The rest of the ingredients can be purchased at the local grocery or pharmacy; additionally, the lab technicians discovered that it would only take minutes to make a batch of liquid meth, and just over ten minutes to cook it up. Liquid meth has already become extremely popular in the eastern part of Europe, and officials in that country have reported that this form of methamphetamine is much stronger than any other form of the drug.

# Meth superlab

Contrary to popular belief, most meth users do not operate meth labs. An estimated 80 percent of the U.S. supply comes instead from organized drug cartels, which manufacture meth for national distribution in a small number of massive California "superlabs." Pioneered by Mexican drug runners in the early 1990s, these labs require enormous volumes of the essential chemicals ephedrine or pseudoephedrine. Traffickers extract these interchangeable ingredients from cough and cold pills sold on the black market.

**"BUBBLING 22"**  
At the center of the operation are four globe-shaped flasks on aluminum bases. These 22-liter glass balls with electric heaters are the superlab's signature feature. Each one sells for \$3,000 to \$4,000 on the street and will make 110,000 doses of meth. Many superlabs string together multiple "22s" for even bigger production.

**1. Grind tablets**  
Tablets of ephedrine or pseudoephedrine are ground to a powder in a blender.

**2. Mix with solvent**  
Ephedrine or pseudoephedrine adheres to the solvent, separating it from white tablet binder.

**3. Filtering binder**  
The binder is removed with a filter. The remaining solvent is cooked away on low heat, leaving pure pseudoephedrine.

**4. Add red phosphorus and acid**  
Mixed in on low heat, the pseudoephedrine changes to methamphetamine, but is too acidic.

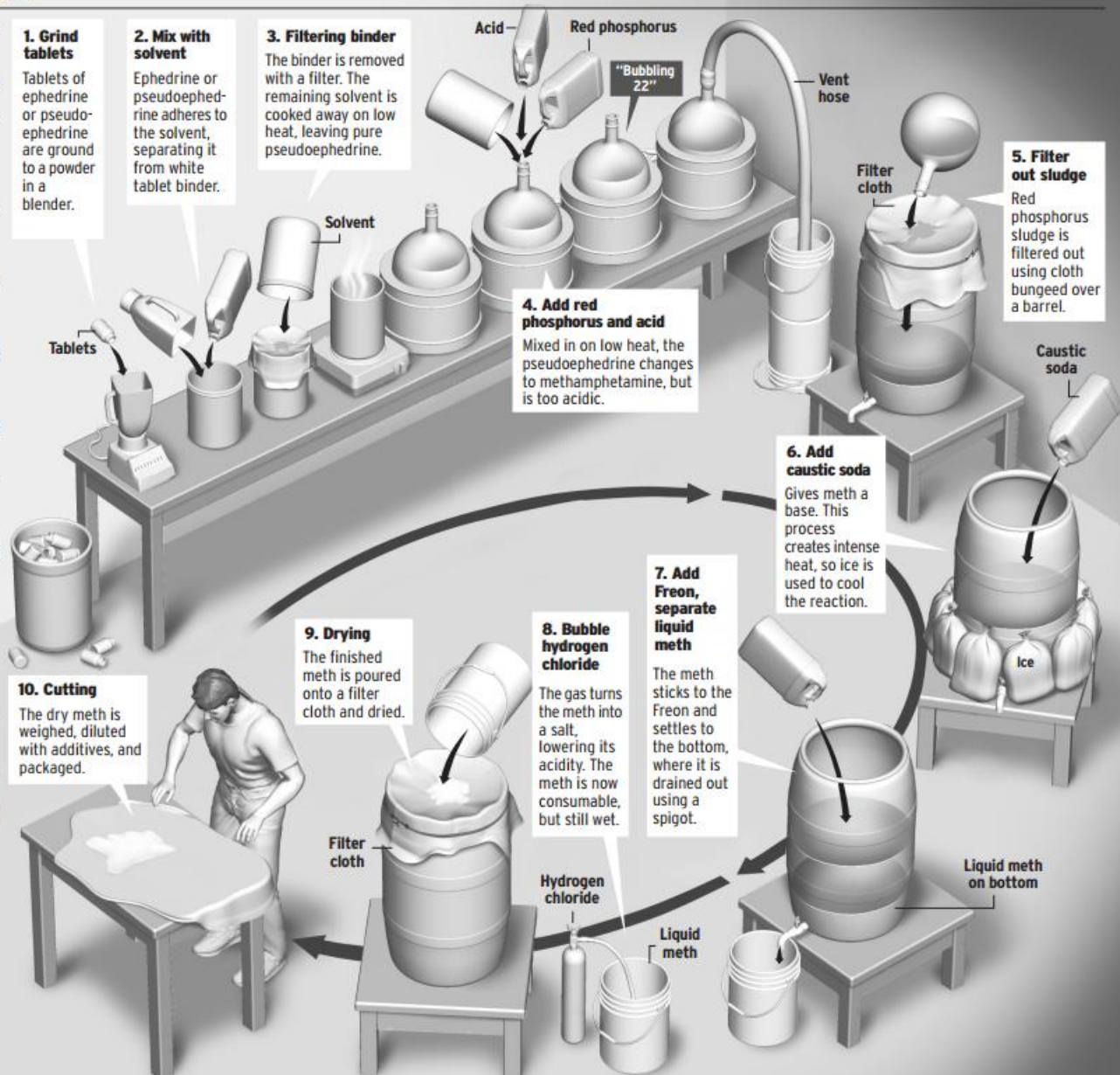
**6. Add caustic soda**  
Gives meth a base. This process creates intense heat, so ice is used to cool the reaction.

**7. Add Freon, separate liquid meth**  
The meth sticks to the Freon and settles to the bottom, where it is drained out using a spigot.

**8. Bubble hydrogen chloride**  
The gas turns the meth into a salt, lowering its acidity. The meth is now consumable, but still wet.

**9. Drying**  
The finished meth is poured onto a filter cloth and dried.

**10. Cutting**  
The dry meth is weighed, diluted with additives, and packaged.



# Side Effects

Liquid meth, like all of the other forms of methamphetamine, has been reported to create a number of toxic effects in the users body, that could include but are not limited to athetosis, which is a condition that is generally characterized by tremors and involuntary spasms that often occur automatically in the body; additionally, other toxic effects of liquid meth often include chest pain and high blood pressure, which could potentially result in irreversible damage to the brain or the heart.

Other more common side effects of liquid meth include dilated pupils, extreme irritability, talking incessantly, disturbance in sleep patterns, extreme nervousness, and an increase in body temperature, which is commonly referred to as hyperthermia. Other long-term negative effects of liquid meth may include, but are not be limited to, damage to many of the major organs of the body, including the kidneys, liver, and the lungs; additionally, liquid meth has been reported to cause panic, paranoia, repetitive behavior patterns, and could make the user begin to feel homicidal or suicidal.

# Observations

Methamphetamine is often dissolved in water (liquefied) for the purposes of covert transportation. It tends to be placed in familiar containers which are commonplace at the point of inspection and often not inspected.

Methamphetamine is also being produced as a liquid that can be applied to paper. Authorities discovered this method after it was detected in personal mail. All that is required is to tear off a strip of paper and ingest it.

Large amounts of liquid meth are smuggled in from Mexico and have reportedly been intercepted at Canadian borders, smuggled in bottles disguised as tequila or other alcohol.

Normal tequila is not oily looking or viscous, and generally has no bubbles after shaking it. Liquid meth appears like cooking oil after being shaken. Normal Tequila Cooking Oil Likewise, beer bubbles form quickly and dissipate to form a head, whereas meth containers have bubbles that remain suspended in the liquid long after being shaken.



# Video



<http://abcnews.go.com/US/video/california-drug-bust-meth-smuggled-tequila-bottles-17769461>

# Cheeba Chews



# Overview

cheebachews states on their website [cheebachews.com](http://cheebachews.com) revealed an assortment of taffy products which are produced in both a “Medicated” and “Unmedicated” versions. According to the manufacturer, the Medicated products contain anywhere from 70mg to 175mg of THC and the Unmedicated product contains hemp oil. Both products weigh approximately 10 grams and contain several other ingredients. The manufacturer makes a claim that their product is a “super food” and provides a list of health benefits attributed to the high quality of ingredients contained in their product. Officers should be aware of this product due to its ability to be easily confused with regular taffy or candy.



### WHY ARE THESE CHEWS SO POPULAR?

Staying true to what matters most to you, potency, consistency, and discreetness. Our consistent process of activating and infusing cannabinoids into edibles has proven itself to patients time and time again. Give them a try, you will be glad you did!

#### • SATIVA • CHOCOLATE TAFFY



THC - 70mg | Net Wt. - 10g

The sativa effect is often characterized as uplifting and energetic. While being mostly cerebral, they give a feeling of optimism and well-being, as well as providing a good measure of pain relief for certain symptoms. They are known to have a quite spacey, or hallucinogenic effect. Sativa is a good choice for daytime consumption.

>>INGREDIENTS<<

TEST RESULTS

2013-01-08

#### • HYBRID • CHOCOLATE TAFFY



THC - 70mg | Net Wt. - 10g

The hybrid high\* benefits from a combination of traits derived from Sativa & Indica. The effects can be described as a satisfying compromise of the two most well known cannabis varieties. \*Due to the different cannabinoid ratios in each strain of cannabis, hybrid edible effects will vary the most from batch to batch.

>>INGREDIENTS<<

TEST RESULTS

2013-01-08

#### • INDICA • CHOCOLATE TAFFY



THC - 70mg | Net Wt. - 10g

The indica effect is most often described as a pleasant body buzz. Indica's are great for relaxation, stress relief, and for an overall sense of calm and serenity. Indica's are also very effective for overall body pain relief, and often used in the treatment of insomnia.

>>INGREDIENTS<<

TEST RESULTS

2013-01-08

#### • DECA • CHOCOLATE TAFFY



THC - 175mg | Net Wt. - 10g

The 2011 & 2012 High Times Award Winning Deca Dose was designed for high tolerance patients, or patients needing a multiple dose product that is easily broken into smaller doses. The Deca Dose contains 2.5x the medicine of hybrid Chew in the same discreet size.

>>INGREDIENTS<<

TEST RESULTS

2013-01-08

#### NEW! CBD CHEWS FOR PAIN RELIEF

SEE MORE ▶



#### MERCHANDISE AVAILABLE

Shipping Nationwide

SEE MORE ▶



#### NEWS STORY

HIGH TIMES Cannabis Cup WINNER 2011, 2012

SEE MORE ▶



Company News & Awards | Read About Our Other Products | More From Our Customers | Frequently Asked Questions



™ Cheeba Chews 2012

# Video



<http://www.youtube.com/watch?v=qiRIhdtUFI8>

# Tetrahydrocannabinol (THC) Pills



# Overview

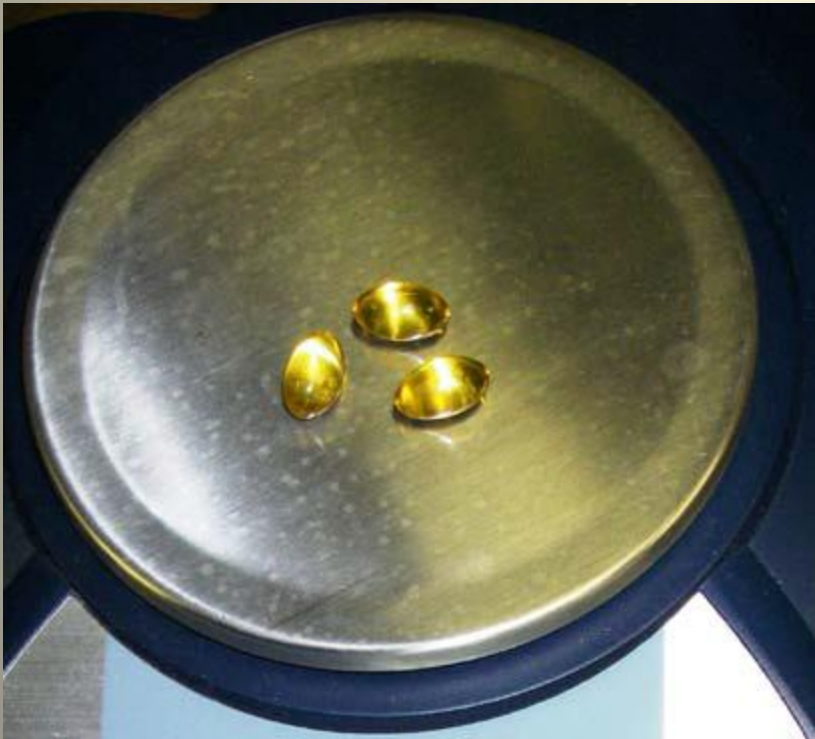
A pill known as Marinol has been legal and approved by the Food and Drug Administration for use with a prescription anywhere in America since 1985.

It's active ingredient? Dronabinol, better known as THC, the primary psychoactive element of the cannabis plant.

"Marinol provides standardized THC concentrations, does not contain the other 400 uncharacterized substances found in smoked marijuana, such as carcinogens or fungal spores, and is not associated with the quick high of smoked marijuana," said Neil Hirsch, a spokesman for Marinol manufacturer Solvay Pharmaceuticals.

Marinol is similar in appearance to vitamin E pills.

THC pills



Vitamin E



# Side Effects

THC has mild to moderate analgesic effects, and cannabis can be used to treat pain by altering transmitter release on dorsal root ganglion of the spinal cord and in the periaqueductal gray. Other effects include relaxation, alteration of visual, auditory, and olfactory senses, fatigue, and appetite stimulation. THC has marked antiemetic properties, and may also reduce aggression in certain subjects.

# Video



<http://www.youtube.com/watch?v=H0lvZq47WAw>

For Questions or Comments regarding this presentation  
please contact:

Lt. Donald W. Reid

[Donald.Reid@indy.gov](mailto:Donald.Reid@indy.gov)  
[mail@reid-security.com](mailto:mail@reid-security.com)

[www.linkedin.com/pub/donald-reid/14/349/647/](http://www.linkedin.com/pub/donald-reid/14/349/647/)